

# se:lab e-desk

# sedus

## Price list 2021.01

Valid as of 01.01.2021

All the prices in this price list are recommended retail prices (EUR) exclusive of VAT.





# list of contents

<b>Surface matrix</b>	<b>4 - 5</b>
<b>Product description</b>	<b>6 - 7</b>
<b>Desks</b>	<b>8 - 10</b>
Desks 700 mm deep	8
Desks 800 mm deep	9
Desks 900 mm deep	10
<b>Desk accessories / Accessories</b>	<b>11 - 14</b>
CPU holder	11
Laptop holder horizontal	11
tray	11
Spacer	12 - 13
Folding cable channel	14
Vertical cable management	14
Horizontal cable management	14

The prices are recommended retail prices excl. VAT.  
Technical changes in shapes, colours and options are reserved  
for all products.

# Surface Matrix

Top / ABS edge

**Melamine**

<i>wood selection</i>																			
K80	ash light	•																	
K81	oak light	•																	
K82	oak natural	•																	
K83	oak cognac	•																	
K84	walnut natural	•																	
<i>architecture line</i>																			
N10	likewood oak	•																	
N11	likewood oak lime washed	•																	
A14	pure white	•																	
K74	natural white	•																	
02	arctic white	•																	
K77	light grey	•																	
K78	pebble grey	•																	
K79	stone grey	•																	
K70	graphite black	•																	
<b>Melamine fire protection class B1</b>																			
K74	natural white	•																	

# Surface Matrix

Top / ABS edge

**Veneer**

<i>Price-group 1</i>																			
B26	beech natural	•																	
Q10	hickory natural	•																	
<i>Price-group 2</i>																			
H11	maple natural	•																	
H12	heartwood maple natural	•																	
C17	oak wenge varnish	•																	
C11	oak natural	•																	
C19	rustic beam oak light	•																	
D14	walnut smooth	•																	
D16	walnut rustic	•																	
E41	ash natural	•																	
E10	ash white	•																	
E45	ash black	•																	
U10	elm natural	•																	
<i>Price-group 3</i>																			
C20	rustic beam oak dark	•																	
D11	walnut dark	•																	
D15	walnut wild	•																	
<b>HPL</b>																			
<i>Price-group 2</i>																			
J10	soft touch white	•																	
J11	soft touch black	•																	
J12	soft touch sand	•																	

# se:lab e-desk product description

## Product family

---

The se:lab e-desk series comprises desks with motorised height adjustment for sitting/standing between 650 and 1280 mm.

## Frame

---

The frame is based on a beam solution consisting of a double support beam and bolted desktop supports which are also used as side panels. The motors and the control are optimally framed by the double support beams.

The high-strength connection of the leg frames with the frame is achieved by means of a stable screw system with 6 screws in order to ensure optimal force transmission into the frame system.

## Leg frames

---

Motorised height adjustment GTI-451 (double telescope):

- „T“-foot with a round column
- 650-1280 mm
- stroke length 630 mm with double telescope
- diameter of the round supporting column 70 mm

The desks contain a control column with one drive per leg frame. The motors are mounted in a steel housing at the upper end of the control columns; these are connected securely to the frame system for optimum transmission of force to the frame. The smooth sliding guide ensures that the double telescope runs safely, guaranteeing a high level of stability.

The one-piece foot support takes up the round design language of the columns. The leg frames have adjustment glides to balance out uneven floors.

In its lowest position, a desk can collide with elements underneath, e.g. pedestals. The lowest position of a desk with a cable tray using a pedestal that is 8 units high with a 19 mm top is 680 mm; using a pedestal that is 9 units high with a 19 mm top is 730 mm.

The dimensions apply for Sedus mobile pedestals.

## Desktop shapes

---

The following desktop dimensions are available for the se:lab e-desk series:

- depth 700 mm, width 1400/1600/1800/2000 mm
- depth 800 mm, width 1400/1600/1800/2000 mm
- depth 900 mm, width 1400/1600/1800/2000 mm

The desktops are available as 19 mm thick three-layer chipboard with melamine resin finish or veneer. The desktops have 90° corners as standard. Optionally, it is possible to have rounded corners with a radius of r=50.

## Product features

---

Desks with motorised height adjustment enable the user to change their position at the desk at the push of a button, which is ideal for people with health problems or to prevent the same.

Desks with motorised height adjustment are notable for the following characteristics:

- very good control
- very long-lasting
- sliding guide for high load-bearing capacity
- motors run simultaneously due to synchronous control
- Soft-Start-Stop for smooth height adjustment
- sensor disconnection as standard
- very quiet
- adjustment range with 630 mm stroke as per DIN EN 527-1

The height adjustment is operated by means of a user-friendly up-down control attached under the desktop on the front right- or left-hand side. Additional control elements are available as an option:

- up-down „slim“ control attached at the edge of the desktop on the right- or left-hand side  
The special feature of the „slim“ control is that it is almost flush with the edge of the desk and reacts to contact.
- an up/down control with a digital height display and a USB charger.  
It offers the user the option of charging his/her smartphone within easy reach.
- a sliding control with a digital height display and a 4-position memory function  
It offers the possibility to quickly call up height adjustment settings for various users in call centres, for example.

The se:lab e-desks come with a gyro sensor as standard. The gyro sensor reacts to tilting of the desktop and assesses this as a collision. Traversing movement is stopped immediately if the desktop is tilted, and enabled again by the minimal countermovement of a possible obstacle. The se:lab e-desk, therefore, boasts highly sensitive collision protection.

The speed of adjustment is approx. 35 mm/sec in neutral. The effective load capacity can be as much as 75 kg depending on the desk size.

In order to prevent injuries from crushing or abrasion, a minimum gap of 25 mm should be left between adjoining surfaces.

## Add-on options

---

The following elements can be attached using the clamp adapter:

- function bridges
- desk-mounted privacy screens
- workstation lamps
- monitor holders

## Spacers

For motorised height-adjustable desks, black spacers are available for a wide range of configurations that guarantee a safety distance of at least 25 mm between the desktops of the desks and between privacy screens and desktops. Spacers are also available which ensure a distance of at least 25 mm to the adjacent corpus furniture.

## CPU holder

The CPU holder is mounted under the desktop. The usable size of the supporting plate is 450 x 205 mm. The maximum load capacity is 10 kg. When the height is adjusted, the holder moves with the desk.

# se:lab e-desk product description

## Laptop holders

A laptop holder is available for the se:lab e-desk series. The holder is mounted under the desktop. The usable size of the support plate is 350 x 330 mm. The maximum load capacity is 10 kg. When the height is adjusted, the holder moves with the desk.

## tray

The se:lab tray is a drawer that is attached underneath the desk. It consists of a metal housing, which is screwed under the desktop, and a pull-out felt tray. With internal dimensions of 210 x 297 mm and a height of 70 mm, the se:lab tray offers sufficient storage space for everyday items, such as pens, notebooks and smartphones. The metal housing can be powder-coated in all common se:lab colours, the felt tray is available in anthracite and light grey. The se:lab tray is optionally available with a lock. The maximum load capacity is 10 kg.

## Electrification

---

### Horizontal cable management

For horizontal cable management, a set of freely positionable Velcro strips is available, which can be attached under the desktop by means of double-sided adhesive tape. The set includes seven mounting plates with a Velcro strip.

A cable net for free positioning under the desktop is also available. The cable net has a size of 280 x 200 mm and is elastic. It is mounted under the desktop using 6 connection points.

The cable trays, which fold down on both sides, are matched to the width of the desk and attached below the worktop. They can accommodate 3- or 4-socket modules to provide the power underneath the desk. The cable trays also have sufficient space for spare cables. When folded down, the cable trays are easily accessible.

### Vertical cable management

Cables are invisibly guided from the floor to the cable channel by means of an optional cable chain. Two options are available for the flexible cable management with cable separation and strain relief:

- free positioning underneath the desktop by means of a bold connection
- mounting on the cable tray

## Finishes

---

### Frame elements

All steel frame elements are finished with solvent-free, environmentally friendly powder coatings. The supporting frame as well as the leg frames are available in clear white, white aluminium and black.

### Desktops

The desktops are available in the following designs:

19 mm three-layer chipboard:

- melamine resin coating in a single colour or various decorative wood effects (top surface compliant with EN 14322), with all-round PP laser edge in the same colour as the top

- matt soft touch surfaces with pleasant haptic properties and an all-round 1 mm ABS edge in the same colour as the top. The desk with the soft touch desktop does not meet the requirements of the GS test certificate according to DIN Special Report 147, as the 3 mm radius of the edge specified by this standard is not maintained.

The minimum light fastness is 6 on the wool scale. Substrate compliant with EN 312-2003

- High-quality crown cut veneer surface, veneer edge on all sides, surface in a high-quality, durable, two-component water-based polyurethane lacquer

Veneer is a natural product. The colour of the veneer is determined by the type and structure of the wood, and may vary. All woods change colour over time because of the effects of light. Natural differences are not a cause for complaint, but in fact confirm that the material is genuine.

With regard to formaldehyde emissions, the coated particle boards comply with standard E05 according to EN 717-1.

For information on the fulfillment of the surface finish and surface brightness according to DIN Special Report 147, please refer to the Surface Overview.

For more information about maintenance and cleaning of surfaces, see „Care and Cleaning Instructions“.

## Packaging

---

Items are supplied in sections for on-site final assembly in order to keep the transport volume as small as possible.

## Quality & ecology

---

The se:lab e-desk series is designed to meet the following requirements:

- GS test certificate
- DIN Special Report 147
- DIN EN-527-1/2/3 office desks (except for soft touch)
- DIN EN 1730
- DIN EN 82079-1
- DIN EN 60335-1
- GS Specification AfPS-GS-2014-01\_PAK
- EK 5/13-11
- PfG EK 5 /AK 3
- BSO / VBG:2016
- ChemVerbotsV:2012-02 (Restriction of Chemicals Act)
- EMVG:2013-08 (Electromagnetic Compatibility of Equipment Act)
- ProdSG:2011:11 (Product Safety Act)
- 1. ProdSV:2011-11 (Product Safety Act)
- 9. ProdSV:2011-08 (Product Safety Act)

- Tested for harmful substances
- PEFC certification for wood components

The production processes are certified to:

- DIN ISO 14001 Environmental management
- DIN ISO 9001 Quality management
- DIN EN ISO 50001 Energy management
- DIN ISO 45001 Occupational safety

# Sedus se:lab e-desk

Desks 700 mm deep



Basic desk					GTF- <b>{10}</b>
Melamine					FS1- <b>{see surface matrix}</b>
Motorised height adjustment 650 - 1280 mm					GTI- <b>{451}</b>
Sensor disconnection					SAB- <b>{12}</b>
hand switch right					BDE- <b>{401}</b>
Mains plug straight (with LD- <b>{D,A,CH,E,I,N,NL,S,USA}</b> )					VAR- <b>{01}</b>
Leg support clear white					FS4- <b>{158}</b>

Width in mm	1400	1600	1800	2000
-------------	------	------	------	------

Code No. LM10WS-RECTA	W14D07	W16D07	W18D07	W20D07
Price/EUR	875,-	885,-	905,-	915,-

## + Options



19 mm

### Top and edge FS1-**{see surface matrix}**

Veneer I	322,-	352,-	373,-	393,-	
Veneer II	365,-	396,-	416,-	436,-	
Veneer III	593,-	633,-	674,-	715,-	
HPL II	365,-	396,-	416,-	436,-	
likewood	38,-	43,-	48,-	53,-	
B1 version K74 MAP- <b>{6060}</b>	29,-	32,-	38,-	46,-	
Top rounded (r=50 mm) PLE- <b>{02}</b>					50,-



### Frame options

black, white aluminium FS4-**{24,119}**



### Electrification

hand switch left BDE-**{400}**

Hand switch Display / USB BDE- <b>{409-right, 408-left}</b>	44,-
---	------

Memory hand switch extendable BDE- <b>{405-right, 404-left}</b>	49,-
---	------

Hand switch slim BDE- <b>{411-right, 410-left}</b>	44,-
--	------

Mains plug angled 90° VAR- <b>{02}</b> for LD- <b>{D,A,E,I,N,NL,S,CH}</b>	11,-
--	------

Mains plug angled 90° VAR- <b>{02_GB}</b> for LD- <b>{BRN,GB,HK,SGP}</b>	8,-
---	-----

Folding cable tray (black) GEL- <b>{KA}</b>	63,-	74,-	81,-	86,-
--	------	------	------	------

Colour of cable tray FKW- <b>{119, 158}</b> white aluminium, clear white	18,-
---	------



# Sedus se:lab e-desk

Desks 800 mm deep



Basic desk					<b>GTF-<a href="#">{10}</a></b>
Melamine					<b>FS1-<a href="#">{see surface matrix}</a></b>
Motorised height adjustment 650 - 1280 mm					<b>GTI-<a href="#">{451}</a></b>
Sensor disconnection					<b>SAB-<a href="#">{12}</a></b>
hand switch right					<b>BDE-<a href="#">{401}</a></b>
Mains plug straight (with LD- <a href="#">{D,A,CH,E,I,N,NL,S,USA}</a> )					<b>VAR-<a href="#">{01}</a></b>
Leg support clear white					<b>FS4-<a href="#">{158}</a></b>

Width in mm	<b>1400</b>	<b>1600</b>	<b>1800</b>	<b>2000</b>
-------------	-------------	-------------	-------------	-------------

<b>Code No. LM10WS-RECTA</b>	<b>W14D08</b>	<b>W16D08</b>	<b>W18D08</b>	<b>W20D08</b>
Price/EUR	885,-	895,-	915,-	925,-

## + Options



19 mm

### Top and edge FS1-[{see surface matrix}](#)

Veneer I	352,-	385,-	389,-	406,-	
Veneer II	387,-	420,-	426,-	444,-	
Veneer III	641,-	698,-	706,-	738,-	
HPL II	387,-	420,-	426,-	444,-	
likewood	43,-	48,-	53,-	58,-	
B1 version K74 <b>MAP-<a href="#">{6060}</a></b>	32,-	36,-	45,-	50,-	
Top rounded (r=50 mm) <b>PLE-<a href="#">{02}</a></b>					50,-



### Frame options

black, white aluminium **FS4-[{24,119}](#)**



### Electrification

hand switch left <b>BDE-<a href="#">{400}</a></b>					
Hand switch Display / USB <b>BDE-<a href="#">{409-right, 408-left}</a></b>					44,-
Memory hand switch extendable <b>BDE-<a href="#">{405-right, 404-left}</a></b>					49,-
Hand switch slim <b>BDE-<a href="#">{411-right, 410-left}</a></b>					44,-
Mains plug angled 90° <b>VAR-<a href="#">{02}</a></b> for LD- <a href="#">{D,A,E,I,N,NL,S,CH}</a>					11,-
Mains plug angled 90° <b>VAR-<a href="#">{02_GB}</a></b> for LD- <a href="#">{BRN,GB,HK,SGP}</a>					8,-
Folding cable tray (black) <b>GEL-<a href="#">{KA}</a></b>	63,-	74,-	81,-	86,-	
Colour of cable tray <b>FKW-<a href="#">{119, 158}</a></b> white aluminium, clear white					18,-

# Sedus se:lab e-desk

Desks 900 mm deep



Basic desk					<b>GTF-<del>{10}</del></b>
Melamine					<b>FS1-<del>{see surface matrix}</del></b>
Motorised height adjustment 650 - 1280 mm					<b>GTI-<del>{451}</del></b>
Sensor disconnection					<b>SAB-<del>{12}</del></b>
hand switch right					<b>BDE-<del>{401}</del></b>
Mains plug straight (with LD- <del>{D,A,CH,E,I,N,NL,S,USA}</del> )					<b>VAR-<del>{01}</del></b>
Leg support clear white					<b>FS4-<del>{158}</del></b>

Width in mm	<b>1400</b>	<b>1600</b>	<b>1800</b>	<b>2000</b>
-------------	-------------	-------------	-------------	-------------

<b>Code No. LM10WS-RECTA</b>	<b>W14D09</b>	<b>W16D09</b>	<b>W18D09</b>	<b>W20D09</b>
Price/EUR	895,-	905,-	925,-	935,-

## + Options



19 mm

### Top and edge FS1-~~{see surface matrix}~~

Veneer I	368,-	396,-	408,-	423,-
Veneer II	403,-	430,-	446,-	463,-
Veneer III	673,-	719,-	741,-	771,-
HPL II	403,-	430,-	446,-	463,-
likewood	47,-	53,-	58,-	69,-
B1 version K74 <b>MAP-<del>{6060}</del></b>	40,-	45,-	50,-	55,-

Top rounded (r=50 mm) <b>PLE-<del>{02}</del></b>					50,-
--	--	--	--	--	------

### Frame options

black, white aluminium **FS4-~~{24,119}~~**



### Electrification

hand switch left **BDE-~~{400}~~**

Hand switch Display / USB <b>BDE-<del>{409-right, 408-left}</del></b>	44,-
---	------

Memory hand switch extendable <b>BDE-<del>{405-right, 404-left}</del></b>	49,-
---	------

Hand switch slim <b>BDE-<del>{411-right, 410-left}</del></b>	44,-
--	------

Mains plug angled 90° <b>VAR-<del>{02}</del></b> for LD- <del>{D,A,E,I,N,NL,S,CH}</del>	11,-
--	------

Mains plug angled 90° <b>VAR-<del>{02_GB}</del></b> for LD- <del>{BRN,GB,HK,SGP}</del>	8,-
---	-----

Folding cable tray (black) <b>GEL-<del>{KA}</del></b>	63,-	74,-	81,-	86,-
---	------	------	------	------

Colour of cable tray <b>FKW-<del>{119, 158}</del></b> white aluminium, clear white					18,-
---	--	--	--	--	------

# Sedus se:lab e-desk

## CPU holder

The maximum load capacity is 10 kg.

clear white

FS6-**{158}**

Measurements in mm

450 x 205

**Code No. LA90AC-CPUHO**

Price/EUR

125,-

### + Options

#### Colour accessories

black, white aluminium FS6-**{24,119}**

## Laptop holder horizontal

The maximum load capacity is 10 kg.

clear white

FS6-**{158}**

Measurements in mm

350 x 330

**Code No. LA90AC-LAPHO**

Price/EUR

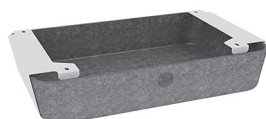
125,-

### + Options

#### Colour accessories

black, white aluminium FS6-**{24,119}**

## tray



PET felt tray in anthracite

FSC-**{V51}**

Metal housing in clear white

FS6-**{158}**

Measurements in mm

210 x 297

**Code No. LA90AC-FTRAY**

Price/EUR

149,-

### + Options

#### Metal housing

black FS6-**{24}**

#### Colour felt tray

PET felt in light grey FSC-**{V52}**

#### Locking system

with series locking GVS-**{0301-0360}**

26,-

# Sedus se:lab e-desk

## Spacer, double workstations

Finish black

F66-**{24}**

Type

**Set  
(2 pieces)**

**Code No. LM90AC-SPAB2**

Price/EUR

86,-

### + Options

#### Double workstation

for 30 mm distance between the table tops **GT9-**{30}****

for 100 mm distance between the table tops (2 x easy screen) **GT9-**{100}****

for 150 mm distance between the table tops (2 x se:wall privacy screen) **GT9-**{150}****

#### Desk depth

700 mm **ATI-**{700}****

800 mm **ATI-**{800}****

900 mm **ATI-**{900}****

## Spacer, 2 double workstations

Finish black

F66-**{24}**

Type

**1 piece**

**Code No. LM90AC-SPAB4**

Price/EUR

86,-

### + Options

#### Double workstation

for 30 mm distance between the table tops **GT9-**{30}****

for 100 mm distance between the table tops (2 x easy screen) **GT9-**{100}****

for 150 mm distance between the table tops (2 x se:wall privacy screen) **GT9-**{150}****

#### Desk depth

700 mm **ATI-**{700}****

800 mm **ATI-**{800}****

900 mm **ATI-**{900}****

# Sedus se:lab e-desk

## Spacer, linear

### Set (2 pieces)

black **F66- $\{24\}$**

for 30 mm distance between the table tops **GT9- $\{30\}$**

Code No. **LM90AC-SPALI**

81,-

## Spacer, pedestal / storage unit

### 1 piece

black **F66- $\{24\}$**

for 30 mm distance **GT9- $\{30\}$**

Code No. **LM90AC-SPAPU**

57,-

Not possible in conjunction with mobile personal storage unit!

## Spacer, se:wall and se:screen(free-standing screen)

### Set (2 pieces)

black

**F66- $\{24\}$**

for 115 mm distance between the table tops (1 x se:wall free-standing screen or 1 x se:screen free-standing screen)

**GT9- $\{115\}$**

Type

**Spacer**

Code No. **LM90AC-SPAS2**

Price/EUR

97,-

## + Options

### Desk depth

700 mm **ATI- $\{700\}$**

800 mm **ATI- $\{800\}$**

900 mm **ATI- $\{900\}$**

## Spacer, 2 double workstations with se:wall or se:screen (free-standing screen)

### 1 piece

black

**F66- $\{24\}$**

for 115 mm distance between the table tops (1 x se:wall free-standing screen or 1 x se:screen free-standing screen)

**GT9- $\{115\}$**

Type

**Spacer**

Code No. **LM90AC-SPAS4**

Price/EUR

89,-

## + Options

### Desk depth

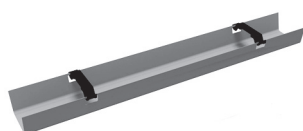
700 mm **ATI- $\{700\}$**

800 mm **ATI- $\{800\}$**

900 mm **ATI- $\{900\}$**

# Sedus se:lab e-desk

## Folding cable tray



Cable tray black

FKW-{24}

Width in mm	850	1050	1250	1450
Desk width in mm	1400	1600	1800	2000

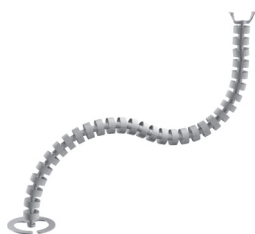
Code No. LA90WS-FOCAB	W14	W16	W18	W20
Price/EUR	58,-	69,-	76,-	81,-

## + Options

### Colour of cable tray

clear white, white aluminium	FKW-{158,119}	18,-
------------------------------	---------------	------

## Vertical cable management



### Cable management system with cable tension relief device; desk and floor adapter for fixing to cable tray

for height adjustment by gas spring or by electric motor

black, translucent white, white FS6-{24,105,120}

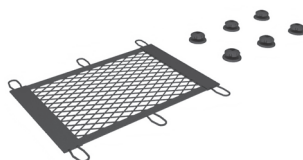
Code No. 63297	76,-
----------------	------

### Cable management system with strain relief; floor adapter and desk mounting for free positioning

black, translucent white, white FS6-{24,105,120}

Code No. MP90AC-CAMEL	76,-
-----------------------	------

## Horizontal cable management



### Cable net, elastic and freely positionable

280 x 200 mm with 6 connection points

Code No. MP90AC-CANET	18,-
-----------------------	------



### Velcro cable management set

consisting of 7 mounting plates with a Velcro strip for flexible attachment under the table top

Code No. MP90AC-STRIP	7,-
-----------------------	-----